

# 4000R SERIES (Pitch 3.96 mm R/A Type Low Mounting Ears)

## FEATURE

Insulator Material : PBT + 30% Glass Fiber UL94V-0  
 Contact Material : Brass  
 Plating : Selective Gold Plating Over Nickel On Contact Area  
 100μ" Tin Plating On Tail Section  
 50μ" Nickel Underplating

## SPECIFICATION

Current Rating : 3 Ampere  
 Contact Resistance : 20 milliohms maximum  
 Insulation Resistance : 5000 megohms minimum  
 Voltage Rating : 800 VAC 1 minute  
 Operation Temperature Range : -55°C to +105°C

## ORDERING INFORMATION

4000R - □□□ - B - C - □ - W - □

### Termination Type

R : Right Angle Type

### No. of Contacts

### Pitch & Row to Row (R)

B : Pitch 3.96 Row to Row 3.96

### Other Custom Options

### Mounting Ears

W : With Mounting Ears

N : No Mounting Ears

### Plating Code

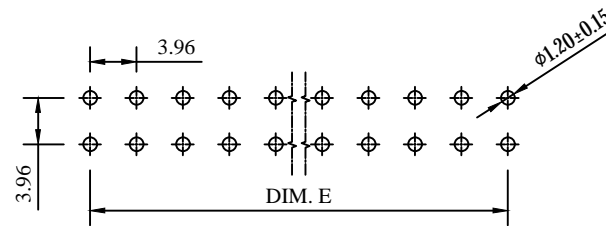
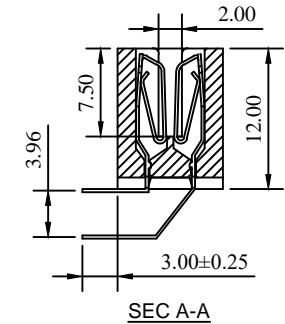
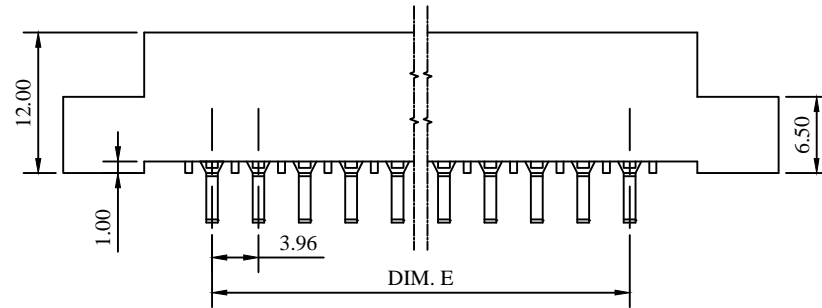
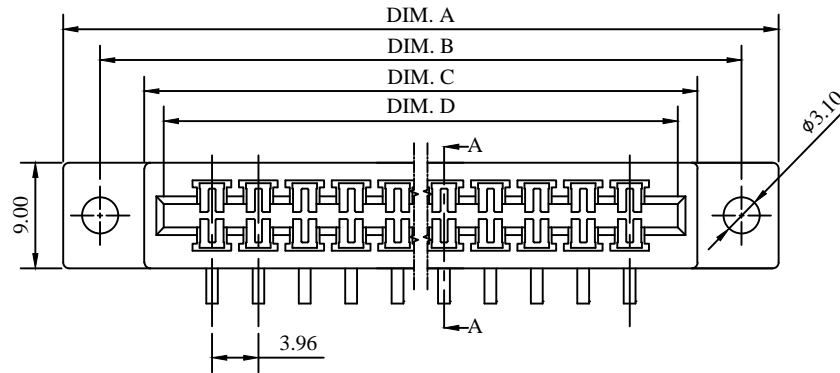
### Tail Length (T)

A : 3.00 mm

No. of Contacts	Dimensions (Dim.)				
	A	B	C	D	E
5/10	41.24	34.94	27.40	24.06	15.84
6/12	45.20	38.90	31.36	28.02	19.80
8/16	53.12	46.82	39.28	35.94	27.72
10/20	61.04	54.74	47.20	43.86	35.64
12/24	68.96	62.66	55.12	51.78	43.56
13/26	72.92	66.62	59.08	55.74	47.52
14/28	76.88	70.58	63.04	59.70	51.48
15/30	80.84	74.54	67.00	63.66	55.44
16/32	84.80	78.50	70.96	67.62	59.40
18/36	92.72	86.42	78.88	75.54	67.32
20/40	100.64	94.34	86.80	83.46	75.24
22/44	108.56	102.26	94.72	91.38	83.16
23/46	112.52	106.22	98.68	95.34	87.12
24/48	116.48	110.18	102.64	99.30	91.08
25/50	120.44	114.14	106.60	103.26	95.04
28/56	132.32	126.02	118.48	115.14	106.92
30/60	140.24	133.94	126.40	123.06	114.84
31/62	144.20	137.90	130.36	127.02	118.80
32/64	148.16	141.86	134.32	130.98	122.76
35/70	160.04	153.74	146.20	142.86	134.64
36/72	164.00	157.70	150.16	146.82	138.60
43/86	191.72	185.42	177.88	174.54	166.32

Row to Row (R)	
B	3.96
C	5.08

Plating Code	
1	10μ"
2	G/F
3	3μ"
4	5μ"
5	G/F Overall
6	30μ"
7	Tin Overall
8	15μ"
9	20μ"



RECOMMENDED PCB LAYOUT

Title : Customer Drawing		Type : Edgecard Connector		彩電企業股份有限公司 CHARTRON INCORPORATION					
Part No. : 4000R Series									
Description :				Tolerances Unless Otherwise Specified :					
Pitch 3.96 mm Edge Card Connector Right Angle Type				X. ± 0.50		.X ± 0.38		.XX ± 0.25	
Tail Length 3.00 mm				X. ° ±		.X ° ±		.XX ° ±	
With Mounting Ear				DWG No. : 010 - 0000 - 54R		Date : 01 - Feb. - 2018		Dim. Scale Sheet Rev.	
APPD. : James C.		CHK. : Connie Z.		DRW. : Bryant C.		mm		N/A 1 of 1 J	